



591 NE Rice Street  
Myrtle Creek, OR 97457  
541-863-3104  
<http://www.susd.k12.or.us/cms>

Michelle Lind, Principal  
Ari Maloney, Counselor  
Eric Savage, Dean of Students  
Peggy Hubbard, Office Manager  
Shirley Cockrell, Secretary

July 15, 2024

Dear Parents and Guardians,

This is it, the back-to-school letter and just when we were getting used to waking up late and forgetting what day of the week it was. As we approach the beginning of a new school year, I am filled with excitement and anticipation for what lies ahead. Reflecting on my first year as principal, I am proud of the strides we made together and eager to implement positive changes that will further enhance our students' learning experiences and overall success.

One of the most exciting additions this year is the introduction of three reward trips, designed to recognize and celebrate students who excel in attendance and punctuality, academic achievement, and exemplary behavior. These trips are not only a way to reward our students but also to motivate them to consistently strive for excellence in all areas.

In our continuous effort to support student learning, we will be placing a greater emphasis on assessments and evidence of learning. While practice and note-taking remain important, we believe that focusing more on assessments will provide a clearer picture of each student's understanding and progress. This shift will help us better identify areas where students may need additional support and ensure that all our learners are on the path to success.

To further support our students, we are introducing a daily advisory period. This time will be dedicated to both academic support and social-emotional learning, providing students with a structured environment to address their individual needs and build essential skills for their overall well-being.

I am also thrilled to announce our Open House, scheduled for September 11th. This will be a wonderful opportunity for you to meet our dedicated staff, tour the school, and learn more about our plans for the year. Additionally, we have added a Back-to-School Dance on September 19<sup>th</sup> right after school, which I am sure will be a fun and memorable event for our students.

I would like to encourage all families to take advantage of the free dental hygiene program provided to students through the Healthy Kids Outreach Program. This phenomenal program offers preventative care to all students, helping to ensure their health and well-being throughout the school year. You will find the enrollment paper for this program enclosed.

You will find a paper included with this letter to help families track their student's attendance. Attending 90% or more of the school year is essential to student success and helps ensure continuous learning without gaps. We look forward to working closely with families to achieve this goal.

As we look forward to the new school year, I am committed to finding even more ways to communicate and engage with families. Your involvement and support are crucial to our students' success, and I am excited about the opportunities we will have to collaborate and connect throughout the year.

Thank you for your continued partnership and support. Together, we can make this school year a remarkable one for all our students.

Warm regards,

Michelle Lind

Principal

Coffenberry Middle School



## Keep Track of Time

Successful students attend school regularly, with support from all of us at school, home and the community. Track missed days here:

<b>1</b>	<b>2</b>	<b>3</b>	<b>4</b>	<b>5</b>	<b>6</b>
Date	Date	Date	Date	Date	Date
Reason	Reason	Reason	Reason	Reason	Reason

**Satisfactory Attendance**

<b>7</b>	<b>8</b>	<b>9</b>	<b>10</b>	<b>11</b>	<b>12</b>
Date	Date	Date	Date	Date	Date
Reason	Reason	Reason	Reason	Reason	Reason

**Satisfactory Attendance**      **Moderate Chronic Absence, Ask for Help**

<b>13</b>	<b>14</b>	<b>15</b>	<b>16</b>	<b>17</b>	<b>18 or more:</b> <b>Chronically Absent, Ask for Help</b>
Date	Date	Date	Date	Date	
Reason	Reason	Reason	Reason	Reason	

**Moderate Chronic Absence, Ask for Help**

## Too Sick for School?

### Students can go to school if:

- They have a runny nose or little cough, but no other symptoms.
- They haven't taken any fever-reducing medicine for 24 hours, and have been fever-free during that time.
- They haven't thrown up or had diarrhea for 24 hours.

### Keep students home if:

- They have a temperature higher than 100.4 degrees even after taking medicine.
- They are throwing up or have diarrhea.
- Their eyes are pink and crusty.

### Call the doctor if:

- They have a temperature higher than 100.4 degrees for more than two days.
- They've been throwing up or have diarrhea for more than two days.
- They've had the sniffles for more than a week, and aren't getting better.

These are generally accepted guidelines. Every body is different. If you are unsure, ask your health care provider or call your school.



# FACT SHEET

Not all patients may qualify for all services; provider will determine which services are clinically appropriate based on the patient's individual needs.

## Screening (Teeth Checkup)

A dental care professional will look in the mouth to check for changes in teeth that may indicate cavities or other oral health problems.

**Risk(s):** Decay or other problems could exist and get worse if not discovered.

**Alternative(s):** No checkup.

## Fluoride Coating

A temporary thin coating (also called varnish) put on the teeth to help protect from cavities. The coating is safe even if it is swallowed. It does not hurt or stain the teeth.

**Risk(s):** Allergy is not common.

**Alternative(s):** Daily or weekly fluoride rinses, fluoride foam, or fluoride gels applied at your dentist's office.

## Sealant

A dental sealant is a white coating put on the chewing surfaces of back teeth where cavities occur most often. Sealants make barriers on teeth that keep bacteria out and prevent cavities. They do not interfere with biting or chewing.

**Risk(s):** Sealants only protect the chewing surfaces. They can last for several years, but sometimes need to be replaced.

**Alternative(s):** Silver Fluoride. No sealants. Choosing not to use sealants could increase the chances you will develop decay in the chewing surfaces of the teeth.



Before Sealants



After Sealants

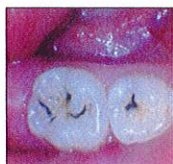
## Silver Fluoride

Fluoride with silver looks like water. It is painted on the teeth with a tiny brush and can heal early tooth decay. It goes on quickly, and does not hurt. If there are cavities in the mouth, silver fluoride can stop them from growing, and sometimes even heal them. Cavities that are stopped or healed with Silver Fluoride will turn dark brown or black. Teeth without cavities will not change color. If the color shows a lot, a dental professional can cover it with white filling material. Fillings may not be needed for cavities that are stopped with Silver Fluoride.

**Risk(s):** If Silver Fluoride comes in contact with skin it will cause a small dark spot that will go away on its own in 1-2 weeks. If it comes into contact with existing white fillings it might stain.

**Alternative(s):** No Silver Fluoride applied. This could leave harmful bacteria on your teeth and increase the chance of tooth decay. Use fluoride toothpaste regularly and have fluoride varnish and sealants applied at your dental office.

### How Silver Fluoride looks on a tooth with a cavity



### How Silver Fluoride looks on a tooth with no cavity



Before

After

## Antiseptic For The Teeth (Iodine)

The antiseptic kills bacteria that cause cavities. When applied before the fluoride coating, it prevents many more cavities than the fluoride coating alone. Iodine is a normal part of our diet from food and is safe. It does not hurt or stain the teeth.

**Risk(s):** Allergic reactions are not common, but you should not have this treatment if you are allergic to shellfish.

**Alternative(s):** No iodine applied. This could leave harmful bacteria on your teeth and increase the chance of tooth decay.

## Protective Restoration

This is a simple tooth colored filling placed in a cavity to protect the tooth until a permanent filling can be done. It relieves pain and helps healing inside of the tooth. No shots are needed. It does not hurt.

**Risk(s):** Protective fillings may partially fall out, but what is left still protects the tooth.

**Alternative(s):** A regular filling or cap. Without care, the cavity may get bigger or become painful.

## Petroleum Jelly

Petroleum Jelly may be utilized for dry-chapped lips during treatment, as well as during the placement of sealants.